

# Bravura®

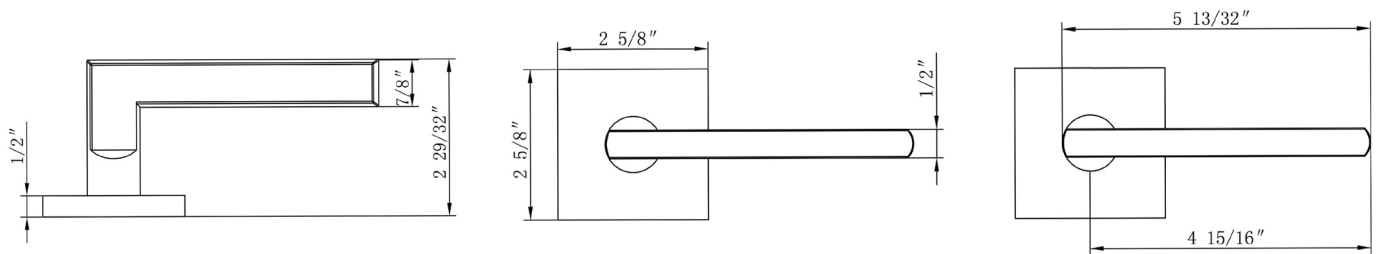
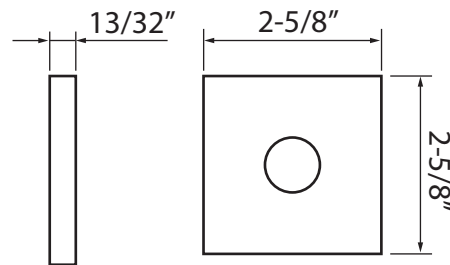
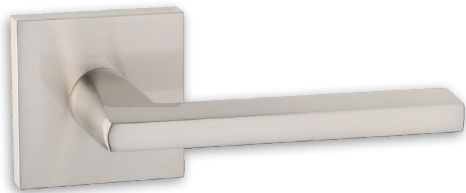
## Specifications:

<b>Door Prep</b>	Deadbolt cross bore: 2-1/8" Cross bore: 2-1/8" Edge bore: 1" Latch Face: 1" x 2-1/4"	<b>Latches</b>	2-3/8" Standard and 2-3/4" Optional Faceplate: 1" x 2-1/4" round corner Bolt: 1/2" Solid Brass throw
<b>Backset</b>	2-3/8" Standard and 2-3/4" Optional	<b>Strikes</b>	Full lip round corner (9103) and square
<b>Door Thickness</b>	1-3/8" ~ 2", 2-1/4" Extension Kits Available		

## 333SC TAMPA LEVER

Shown in Satin Nickel  
with Square Trim

## -7 SQUARE



Function	Finish	CTN Qty	Item No.
Passage	Oil Rubbed Bronze (US10B)	12	BV333702
	Satin Nickel (US15)	12	BV333701
	Black (US19)	12	BV333704
Privacy	Oil Rubbed Bronze (US10B)	12	BV333712
	Satin Nickel (US15)	12	BV333711
	Black (US19)	12	BV333714
Dummy	Oil Rubbed Bronze (US10B)	12	BV333722
	Satin Nickel (US15)	12	BV333721
	Black (US19)	12	BV333724