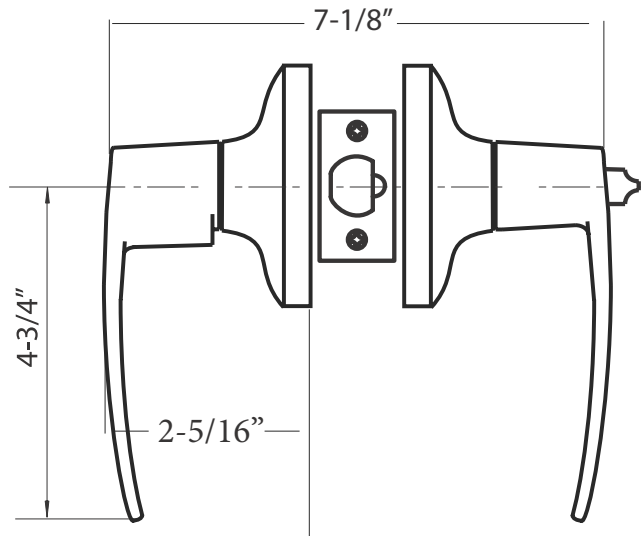
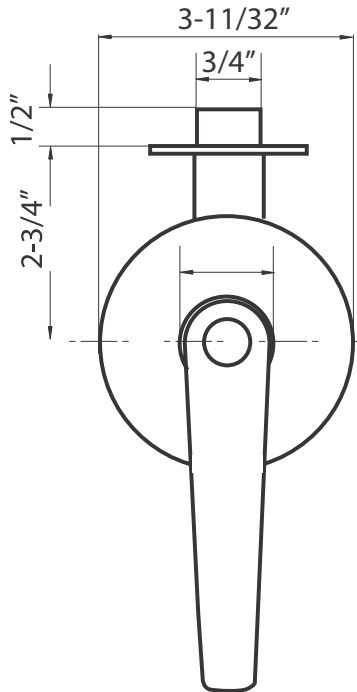


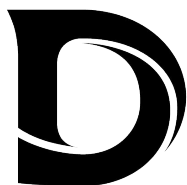
PRODUCT DATA SHEET

Product Description: Built for performance and security, this ANSI/BHMA Grade 2 lockset features a 2-3/4" backset, adjustable door thickness (1-3/8"–2"), and a 1/2" stainless steel latch bolt. Compatible with SC4 6-pin cylinders and small-format interchangeable cores. Includes panic-proof push/turn, anti-friction latch, and meets 3-hour fire rating.



Finish: Satin Chrome

Material: Steel



DELANEY

Description:

**E SERIES - MD ENTRY LEVER STYLE
GRADE 2 HEAVY DUTY
CYLINDRICAL LEVERSET**

Part Number:

3M5002

Date

08/25

Rev.

01

Sheet 1 of 1