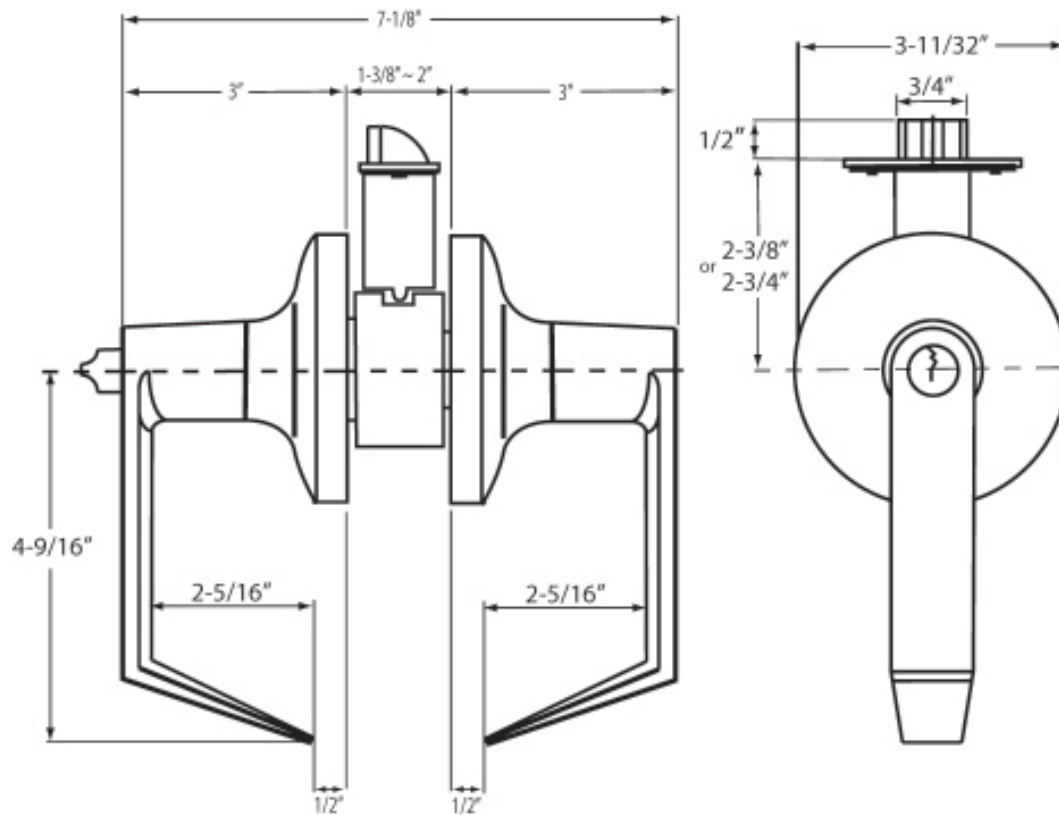


# PRODUCT DATA SHEET

**Product Description:** Built for performance and security, this ANSI/BHMA Grade 2 lockset features a 2-3/4" backset, adjustable door thickness (1-3/8"-2"), and a 1/2" stainless steel latch bolt. Compatible with SC4 6-pin cylinders and small-format interchangeable cores. Includes panic-proof push/turn, anti-friction latch, and meets 3-hour fire rating.



**Finish:** Satin Chrome

**Material:** Steel



**DELANEY**

Description:

**E SERIES - CT LEVERSET PRIVACY STYLE  
GRADE 2 HEAVY DUTY  
CYLINDRICAL LEVERSET**

Part Number:

**3V5022**

Date

**08/25**

Rev.

**01**

Sheet 1 of 1