



Specifications

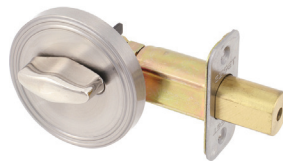
Door Prep	Cross bore: 1-3/4" or 2-1/8" cross bore Edge bore: 1" Latch face: 1" x 2-1/4" *205's Require Special 1-3/4" or 2-1/8" Cross Bore	Latches (6-Way Available)	Deadbolt: 2-3/8" and 2-3/4" 6-way adjustable (9092) Faceplate: 1" x 2-1/4" round corner Bolt: 1" Solid Brass throw with hardened steel rod
Backset	Fits 2-3/8" and 2-3/4"	Strikes	2-1/4" full lip round corner (9113 and 9117)
Door Thickness	1-3/8" ~ 1-3/4" standard. 2-1/4" Ext. Kit Available	Wood Screws	Combination screws that suit both wood or metal door mounting
Cylinder KW1 5-pin standard. SC1 5-Pin optional (Single Cylinder only). Packed KA5			

TRADITIONAL DEADBOLTS

Shown in Satin Nickel



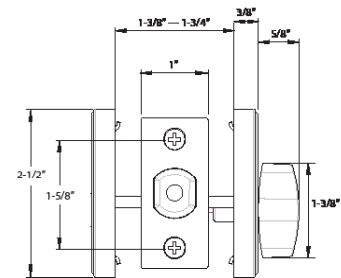
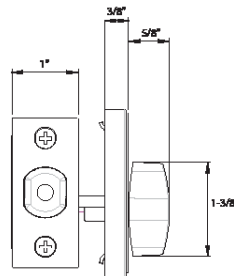
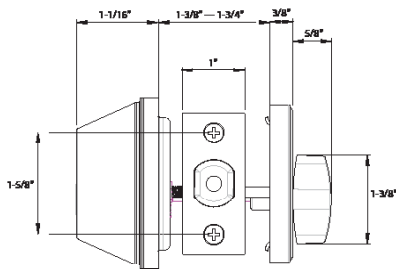
Single Cylinder (200)



One-Sided Half Bore (205)



One-Sided Full Bore (206)



BOX PACK

Model	Function	WT/ LB	CTN QTY		US32D Stainless Steel	US15 Satin Nickel	US26 Polished Chrome	US19 Black	US12P Tuscany Bronze
200-B	Single Cylinder	27 lb	20 Pcs	Item No.	D31002	D31004	D31006	D31009	D31007
				List Price	\$30	\$30	\$30	\$30	\$30
205-S	One-Sided (Half Bore)	15 lb	20 Pcs	Item No.	D35002	D35004	D35006	D35009	—
				List Price	\$19	\$19	\$19	\$19	
206-S	One-Sided (Full Bore)	15 lb	20 Pcs	Item No.	D36002	D36004	—	—	—
				List Price	\$23	\$23			